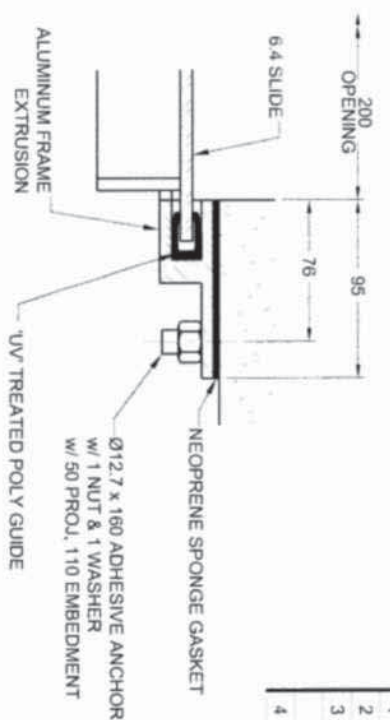


BILL OF MATERIAL

NO.	QTY	DESCRIPTION	MATL.	WT.	PART/DWG NO.
1	1	HANDPULL SLIDE	AL	12.4	09-1097706-076
2	1	HANDPULL FRAME	AL	14.3	09-1097706-075
3	22	Ø 12.7 x 160 LG ADHESIVE ANCHOR w/ 1 NUT & 1 WASHER	304SS	6.8	ABD13160S0
4	1	9.5 x 102 x 4500 SOFT NEOP	RUBB	0.1	AK10209040



SECTION A-A

- NOTES:**
- 1) ALL DIMENSIONS ARE IN MILLIMETRES UNLESS NOTED OTHERWISE
 - 2) SEE MANUAL G-1900-1 FOR INSTALLATION AND ADJUSTMENT INSTRUCTIONS
 - 3) DO NOT SCALE DRAWING
 - 4) INSTALL ANCHOR BOLTS USING THE EMBEDDED DEPTHS AND PROJECTIONS AS SHOWN ON DRAWING AND MANUFACTURER'S RECOMMENDED INSTALLATION INSTRUCTIONS. PROPER INSTALLATION OF THE ANCHOR BOLTS IS THE RESPONSIBILITY OF THE CONTRACTOR
 - 5) ALL ANCHOR BOLT PROJECTIONS ASSUME NO GROUT
 - 6) CONTRACTOR TO VERIFY ALL DIMENSIONS AND ELEVATIONS

- 7) MATL.: SLIDE PLATE - AL 6061-T6
EXTRUSIONS - AL 6061-T6
ALL OTHER AL - 6061-T6
STRUCTURAL FASTENERS: 304SS - ASTM F593, F594 SSTL, TYPE 304
ANCHORS: 304SS - ASTM A276 SSTL TYPE 304 COND. A
POLY - LOW DENSITY BLACK POLYETHYLENE EXTRUSION
NEOPRENE GASKET: RUBB - SOFT SC41 NEOPRENE SPONGE
PSA - IS ASTM D1056-67

- 8) ALL PAINTED SURFACES SUPPLIED w/ MANUFACTURER'S STANDARD COATING, UNLESS NOTED OTHERWISE
- 9) ALL STAINLESS STEEL FASTENERS SHOULD BE INSTALLED WITH AN ANTI-SEIZE LUBRICANT SUCH AS FELPRO CSA COPPER BASE ANTI-SEIZE LUBRICANT
- 10) GATE AND LIFT DESIGNED FOR 1.6 m SEATING AND 1.6 m UNSEATING HEAD MEASURED FROM INVERT

NO.	DATE	DESCRIPTION OF REVISION	BY	CKD
2	10/05/03	ISSUED FOR CONSTRUCTION	AL	
1	10/03/02	RE-ISSUED FOR APPROVAL	AL	JB
0	09/11/06	ISSUED FOR APPROVAL	MMC	JB

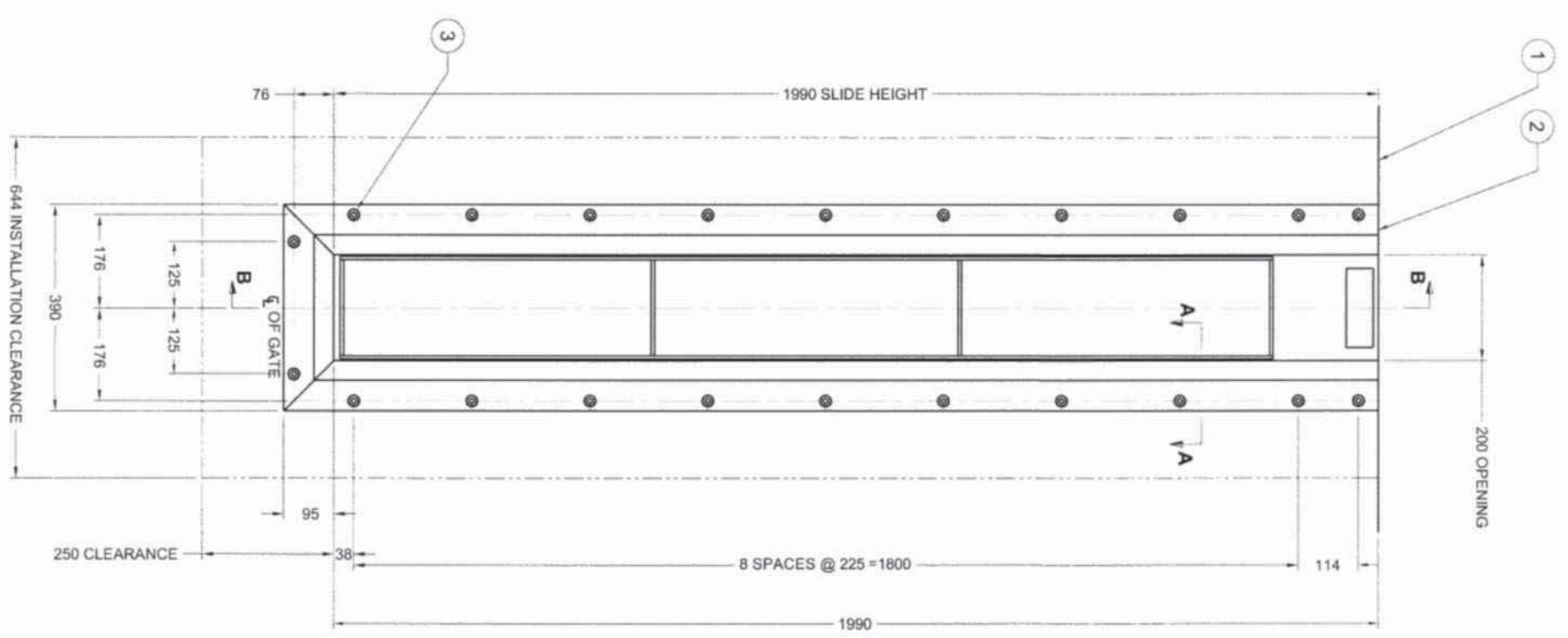
NO.	DATE	DESCRIPTION OF REVISION	BY	CKD
2	10/05/03	ISSUED FOR CONSTRUCTION	AL	
1	10/03/02	RE-ISSUED FOR APPROVAL	AL	JB
0	09/11/06	ISSUED FOR APPROVAL	MMC	JB

MAPLE REINDERS INC.
CITY OF PENTICTON - AWWTP UPGRADE

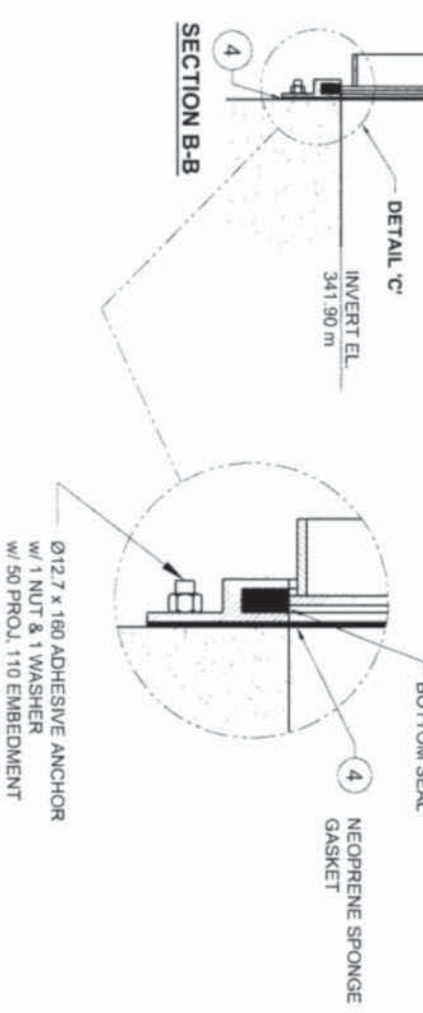
200 x 1990 ALUMINUM
WALL MOUNTED
HANDPULL GATE

TAG NO.	SEE ABOVE	QUANTITY	6	DRAWING NO.	09 1097706 006	REV	2
		WT	33.6 kg	BR - SG#	580-1097706		
				SCALE	N.T.S.		
				SHEET	6 OF 21		

ARANTEC LIMITED PARTNERSHIP



SECTION B-B



DETAIL C'